



DUNCHURCH VILLAGE MAGAZINE

MARCH 2024

ISSUE 22



Photo: Alison King

IN THIS ISSUE

Welcome	2
FODS Finance Report	4
Dunchurch Festival Group	7
Pantomaniacs	8
D-Day Commemoration	11
Dunchurch Allotments	12
Storm Isha	13
Dunchurch Photographic Society	14
Dunchurch Social Club	17
Dunchurch Oak Line Book	19
Art in Dunchurch	23
Dunchurch and Thurlaston WI	23
Lamppost Hanging Baskets	25
Rebranded Pharmacy	25
Dunchurch Achievements Remembered	27
Dunchurch Village Hall and Sportsfield	29
Make a Difference	30
Spring Fair	31
Dunchurch Infant Academy and Nursery	32
Badminton	32
Duke of Edinburgh Award	33
St Peter's Church	35
Baptist Church	36
Dunchurch Needs You	37
Directory	38

PRODUCED BY FRIENDS OF DUNCHURCH SOCIETY

www.friendsofdunchurchsociety.org

Registered Charity No 1203193



FRIENDS OF
DUNCHURCH
SOCIETY (FODS)

Formed by like-minded residents who love Dunchurch and its heritage and wish to protect and enhance its environment in order to make the village a better place to live in, work in and visit.

Village Green House, The Green, Dunchurch, CV22 6NX Telephone: 07837 182114 Email: friendsofdunchurch@gmail.com 

Welcome

Here we are at the start of another year and maybe it is an age thing but the new year seems to come around ever quicker!

Christmas 2023 saw some reassuringly familiar sights, the transformation of Lord John being just one of them thanks to the secret work of the Dunchurch elves. Meanwhile, Santa himself visited to help the Dunchurch Festival Group hand out a total of £10,200 to local good causes. What a bonus for the recipients as we all start fundraising for another year. Santa again appeared at Winter Wonderland which has now become an established seasonal event on the FODS calendar.

However, there is already a full programme



Troll Poppy joined us for Christmas

of events planned for 2024 by all of our village groups with some exciting extras, including a lighting of the beacon event to commemorate the 80th Anniversary of the D-Day landings which is being organised by the Parish Council. The village magazine team will be working hard to meet an early deadline to ensure our next issue in June will provide all the information you need.



Since we began the magazine five years ago, a regular contributor has been Dr Czerniewski from the doctors surgery. This has enabled us to create a lasting historical record of

Thank you to everyone who has planted up a winter blooming barrow. The residents of Earle Gardens joined in with this festive display



The Staddle Stones once again became a focus of festive fun

village doctors, including a first-hand account of the impact of the pandemic. All this will be available for years to come on the FODS website and we thank Dr Hunter for invaluable information and especially Dr Czerniewski who has taken time to write such informative and interesting articles for us. We are now up to date but hope to receive further articles from time to time.

Producing this magazine and delivering it free to households and businesses in the village has only been possible thanks to the support of our advertisers who make it financially viable. Since the start, FODS Trustee Barbara Harris has been the driving force behind the funding and sadly, from March, will no longer be a part of the magazine team. We thank Barbara for her hard work and send



Santa and DFG helpers went door to door collecting for Myton Hospice

her our very best wishes.

Now sit back with a drink of your choice and enjoy reading your village magazine from cover to cover.



Dunchurch doctors in 2023: Dr Sarah Geissler, Dr Ian Czerniewski, Dr Laura Harris, Dr Maurice Collins, Dr Kate Reynolds and Dr Sam Chesser

FODS Finance Report

By **Barbara Harris, Trustee**

Happy New Year to you all and thank you to each and every one of you who supported FODS in 2023.

At the time of writing, our end-of-year accounts have been submitted for auditing to our accountants, Peacocks. I had hopes to share with you the full accounts but we should be able to do this for issue 23 in June.

Currently in the bank we are pleased to report that we hold £6444.

We were pleased to be the recipients of a grant again from the Dunchurch Festival Group of £500 towards the Floral Tree and the 'Up the Pole' planters on the Square car park which really give the village centre a boost and welcoming feel for those visiting and working in the centre of the village. We express our most sincere thanks to the DFG for their generosity.

Our Fashion Show towards the end of the year and the Winter Wonderland event raised £547 and £410 respectively – these raised sums go a massively long way to providing the 32 baskets required for the lighting column displays!

Our fundraising year this year will start in April with our Spring Fair in the village



Our thanks to Paula of Wanda's, her staff and models for putting on a fabulous fashion show in support of Dunchurch in Bloom projects

hall. We hope you will join us for bacon butties and a wander around the stalls, and maybe purchase an item or two! These fundraising events are vital in allowing us to maintain our efforts in producing wonderful floral displays for all to enjoy. Before you know it the village will be a riot of colour with baskets, barrows and troughs aplenty, all thanks to the community volunteers who work with us on this project.

We would love to hear from anyone who may be interested in helping us raise much-needed funds to support Dunchurch in Bloom projects – just email us at friendsofdunchurch@gmail.com. Thank you.

LUXURY KITCHEN NEWS

WE ARE DELIGHTED TO INTRODUCE

TRULY BESPOKE

ALONGSIDE OUR STUNNING RANGE OF MODERN AND TRADITIONAL CROWN IMPERIAL KITCHENS, WE WILL NOW BE OFFERING A TRULY BESPOKE SERVICE.

OUR LUXURY HANDMADE KITCHENS ALLOW CLIENTS THE OPPORTUNITY TO PERSONALISE EVERY LAST DETAIL.

FROM FARROW AND BALL PAINTED FINISHES TO EXQUISITE HAND CRAFTED HARDWARE BY WORLD RENOWNED AND LOCALLY BASED ARMAC MARTIN.

OUR DESIGNERS WILL WORK WITH YOU AND OUR EXPERT CABINET MAKERS TO CREATE A SPACE THAT IS TRULY UNIQUE TO YOUR TASTES AND REQUIREMENTS.

WE CAN ALSO TAKE CARE OF YOUR PROJECT FROM START TO FINISH INCLUDING ANY STRUCTURAL WORKS, CARPENTRY, PLASTERING, ELECTRICS AND PLUMBING AS PART OF OUR "ALL INCLUSIVE" INSTALLATION SERVICE.



THE KITCHENS INC

WARWICKSHIRE, ENGLAND



**Developing your
little one through
the *power of music***



Baby, Toddler,
and Pre-school
classes in
Coventry
and Rugby

To book online visit www.rhythmtime.net/coventry-rugby

Email anneka.h@rhythmtime.org



The Green Man

ALL CHANGE AT THE GREEN MAN

New Management • New Menu

Serving superb freshly cooked quality food
and all at wonderful value for money prices



THE GREEN MAN
DUNCHURCH

Daventry Road
Dunchurch
CV22 6NS

COME AND JOIN US Open every day from 12 noon to 11pm

Easy
parking
to rear



STEAK DEAL FOR 2

Two steaks and a bottle of
house red, white or rosé
starting from £35

Choose your
steak

8oz Rump
8oz Sirloin
10oz Ribeye
Mixed Grill

All supplied by butchers Joseph Morris from local farms • Quality Assured



Reserve a table 01788 810210 email: thegreenman@splendidpubgroup.co.uk

facebook.com/greenmandunchurch

www.thegreenmandunchurch.co.uk

Dunchurch Festival Group

By Julie Peters, Secretary

It hardly seems five minutes since we were gathered around the village Christmas tree handing out cheques, and shaking our collection tins as we followed Santa and his sleigh around the village. Having a ride in Santa's sleigh brought such joy to the children and the village was alive with the spirit of Christmas.

Now as we march through the first quarter of the year, the planning for our programme of events is fully underway.

- We kick off with an old favourite, quiz night on Friday 1st March. If you are reading this before then, there might still be time to join us, just £20 for a team of up to six members. Email juliepeters91@hotmail.co.uk to book your place.
- Saturday 11th May brings a celebration of the D-Day anniversary with a selection of musical acts, sketches and food with a war-time theme.
- Friday 4th October we host our very first murder mystery evening. It's your opportunity to play detective whilst enjoying a meal, with a full bar service available. The mystery has been specially written for us and has a Dunchurch theme.



Santa visited and gave away £10,200 to local good causes

- Friday 25th October sees the return of our popular Halloween disco.

Don't forget to put the village fete on Sunday 23rd June in your diary – a fantastic day for all the family

Community is at the heart of everything that DFG does and we strive to strike a balance between fundraising and providing fun opportunities to bring the village together. We are always looking for extra volunteers to join us. If meetings are not your thing, that's ok – we can use your talents in other ways, perhaps setting up or helping run our events. Why not drop me an email juliepeters91@hotmail.co.uk for more details.

Pantomaniacs



By Sue Protheroe

Another year and another successful panto performed at the village hall. The matinees continue to be very popular with other shows well supported and both of our meal performances a sell-out. We must pay homage to Paul Le Poidevin who swaps from director to chef extraordinaire to produce a fabulous feast for our audience. However, with all thing's panto, Paul would be the first to acknowledge the support of a great team.

The week prior to opening, we were amused to read that Dame Maureen Lipman had called for the BAFTAs to be renamed the DAFTAs, believing that they had become somewhat 'woke'. We are

years ahead of the game and whilst our DAFTAs remain gloriously non-political, they are without doubt absurd! The Dunchurch Amateur Footlight Thespian Awards don't necessarily award greatness but with tongue in cheek, boast such categories as the 'Master of Knowledge Award' won this year by Principle Boy Jim Hawkins for knowing that ships usually only sink the once! These coveted awards are an amusing part of our after-panto party where we have an opportunity to relax with family, and invariably ends in a repeat performance of the songs, giving us one more chance to get the dance moves right! Thank you choreographers Emma and Helen for your patience.



Our fabulous backstage crew. Amazing people who make it happen

Unless you have been involved in 'amdram', you would never know the amount of work that goes into a production or the need for a fabulous team to make it happen. Thankfully, we are truly blessed with the latter and we will come together again in October of this year to bring Dunchurch its first major event of 2025. Why not join us? Email either sueprotheroe@ymail.com or paul.lepoidevin@btopenworld.com. We are a friendly bunch and no prior experience is required.

Thank you DFG

We have much to thank the Dunchurch Festival Group for. It was they who funded our very first panto way back in 1990 before we became self-sufficient the following year. However, the intervening years have taken their toll on our scenery backdrops, some of which require replacement. We are most grateful to the DFG for agreeing a grant of £1,600 to fund one of them. Thank you. Your support for our group and the village of Dunchurch is much appreciated.

**COURSES
ON
OFFER**



LASER

**HAIR, VEIN AND PIGMENT
REMOVAL**

BOOK NOW
FOR YOUR FREE CONSULTATION
AND TEST PATCH

BOOK NOW

More information:
www.annewaesthetics.co.uk

anew
AESTHETICS



For that early
morning cuppa.
For when '7 across'
has you stumped.



For peace. For quiet.
For when a custard
cream tickles
your fancy.



For a hand to
hold when it all feels
too much.



For when you
fall in love,
again.

For that fit of
giggles after a
serious chat.



For "namaste".
For that homely
feeling, even
though you just
moved in.

For every moment,
we're here.



HALLMARK

ANYA COURT
LUXURY CARE HOME

hallmarkcarehomes.co.uk

D-Day Commemoration Event

by Parish Councillor Ian Grogan

Following recent successful community events on Dunchurch Heath, Dunchurch Parish Council, working collaboratively with other groups in our village, is pleased to announce we will be holding a D-Day 80th anniversary event to commemorate this historic date in our nation's history.

There will be a number of elements to proceedings, plenty of fun and a chance to meet our neighbours from across Dunchurch. Events will culminate with the lighting of the beacon and we will be commemorating and celebrating with many other communities across the UK.



Make sure you save the date of Thursday 6th June and look out for more details as the programme of events evolves over the next few months. All are welcome.



UNION CANAL CARRIERS LTD

Union Canal Carriers aims to set standards that few hire fleets can match. Because we are as enthusiastic as ever about "canaling" and have over 50 years hiring boats on the "cut" you know that you are in safe hands and can cruise with confidence.



Holiday Boat Hire



You can hire this boat for a day
 For up to 12 people
 Ouzel II is fully equipped with a galley, sink, gas hob, toilet, seating for 12 & buoyancy aids on request.
Great value! Great fun!
 No experience required, Instruction given
 Choice of scenic routes
 Ideal for family or other social occasions
 Have a canal side picnic or lunch in a pub

Monday - Friday £150.00 incl
Weekends / bank holidays -
£195 incl
Telephone 01788 890784

Union Canal Carriers, Braunston Pump House, Dark Lane, Braunston, Northants NN11 7HJ

Tel: **01788 890784**

Email: info@unioncanalcarriers.co.uk

Web: www.unioncanalcarriers.co.uk



Follow us on Facebook



Follow us on Twitter

Dunchurch Allotments

By Paul Sanders

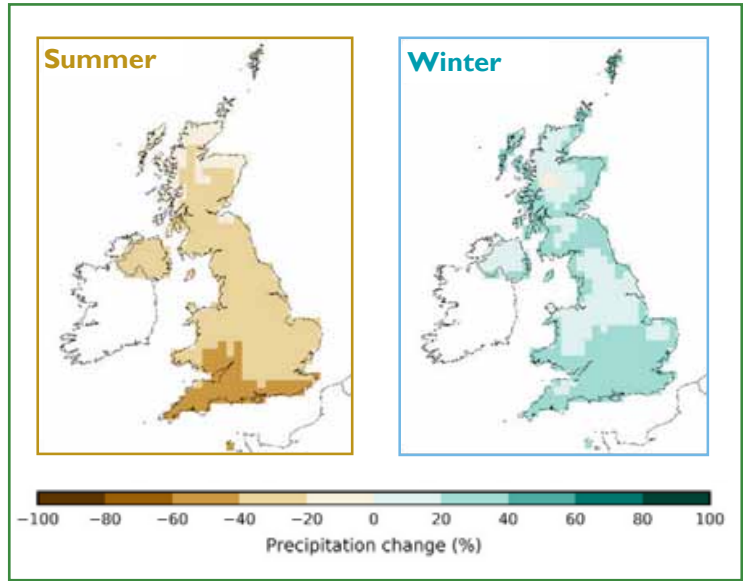
As I write this piece in December, COP28 in Dubai is in full swing. It is here that leaders meet to agree on the necessary measures that are needed to combat climate change. It made me think of how our members on the allotments will need to adapt to the changes in the weather patterns that we are already experiencing and how we should be adjusting our gardening practices to reduce our impact on climate change.

As the world warms the UK, according to the Met Office, is likely to have hotter, drier summers and warmer, wetter winters. Extreme weather events such

as heatwaves and heavy downpours could become more frequent and more intense. As a gardening community we are ahead in some practices but falling short in others.

On the positive side peat-based growing mediums are a thing of the past which is a good thing as peat bogs from which the growing medium was extracted are an important carbon sink.

As we grow lots of our own fruit and veg the carbon footprint on what we eat is low as the distance the food has travelled to get onto our plate is short.



A few people still use synthetic fertilisers, which if not absorbed by plants break down to form potent greenhouse gases. However some ingenious forward-looking plot holders are making their own fertiliser from nettles and comfrey leaves.

Harvesting rainwater is increasingly being undertaken in anticipation of likely summer drought and this coincidentally reduces the reliance on energy-intensive water treatment processes.

On the negative side all our grass-cutting machines are petrol powered so produce greenhouse gases; a move to battery-powered machines would be beneficial, reducing noise and air pollution. But it would be important to ensure that the energy used for charging these machines does not come from fossil fuels.

One area rarely considered is that the soil in our gardens is an important carbon sink, locking up compounds of carbon in the soil. To maintain this carbon store the advice is do little to disturb it. By digging or rotavating we expose the soil to the air, releasing carbon dioxide and other greenhouse gases as the micro-organisms get to work breaking down the organic matter. This may seem counterintuitive for gardeners, but digging the soil is bad for the planet. Increasingly, many of our members are turning to no-dig methods of cultivation,

largely to ease their workload but this fortuitously helps in the battle against climate change.

Allotment holders have a unique opportunity to be stewards of the land, making positive contributions to climate change mitigation. By adopting eco-friendly practices, we not only protect our environment but also create a more resilient and sustainable community for generations to come.

Storm Isha

On the 22nd January, storm Isha caused havoc across the country and sadly, this long established tree on The Heath felt the full brunt of its strength. Our thanks to Jaïne Thornton-Weeks for the photograph



Dunchurch Photographic Society



By Graeme Webb, Committee Member

Dunchurch Photographic Society's (DPS) first 2024 meeting after the festive break was a highly educational, as well as entertaining evening hosted by Tony McMaster, founder of the Camera Club Live YouTube channel. The event was held at his Barby Moorings studio.

During our visit, Tony delved into some of the basic and more complex theories around taking a photograph including the differences between aperture, focal length and exposure and how it all comes together to change the way a photograph

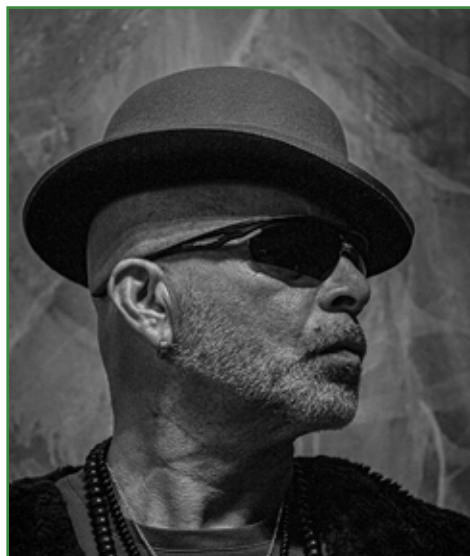
looks when captured in camera.

Members who had brought along their cameras were encouraged to try their hand at capturing their own images of the table-top still life arrangements using flash equipment supplied by Tony. This included tripod users and those brave enough, were encouraged to try this with their hand-held cameras.

Our first meeting back at our normal meeting place, The WI Hall in Dunchurch, saw the first of three merit competitions. Members entered prints and digital images on two separate competitions featuring the subject of portraiture. As



1 Aneta by Mark Ellis



2 Deep in thought by Ellie Peel



3 Emily in red
by Simon Coates

usual we were judged by an independent expert.

DPS caters for all types of photographer; whether your interest is portraiture, sport, still life or landscapes, all are welcome. All you need is a camera and the one on your phone is a great place to start. Don't worry about being a 'newbie', all levels of ability are equally encouraged.

Other evening activities include a lecture on tabletop photography and a 'show and tell' where members are invited to discuss their own images.

We also have challenges with other clubs from the area. As good natured as these meetings are, they are also educational. It's great to learn from other clubs and their members' efforts.

If you are interested in joining, rejoining or attending one of our summer walks, please contact our secretary via secretary@dunchurchps.com. We would love to hear from you. Your first two meetings are free so come and give it a try. We also have an introductory discount for new and rejoining members.

Jane Archer - Artist

Original watercolours, prints, cards and cushions



janearcher8@gmail.com



Jane Archer Artist



@janearcherartist

www.janearcherart.co.uk

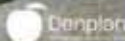
TULIP TIME! SPRING WORKSHOPS
See www.janearcherart.co.uk for details and booking

Find me at my
studio in Toft Lane
– visits welcome by
appointment

MAKE SURE YOUR TEETH
ARE HAPPY THIS YEAR.



GDE 10010006



If there's one New Years resolution you should definitely keep this year, it's to treat your teeth to a check up.

At Courtyard Family Dental Practice we work hard to get to know your teeth personally and help keep them in tip top condition. So why not book an appointment today and help ensure your teeth have the very best chance of ringing in the changes for many more years to come.



COURTYARD
FAMILY DENTAL PRACTICE
WE KNOW YOUR TEETH. PERSONALLY.

01788 519 831 www.courtyard-dental.co.uk r/o 4 Daventry Rd, Dunchurch, Warwks. CV22 6NS

Heart of
England
Bridge
Friendly Bridge



**NEW BEGINNERS
LESSONS**

Thursday Morning
10.00-12.00

From 14th March

10 Lessons

Only £30

**Try one for free
No Obligation**

NT

Nicky Bainbridge
07710 467 023

www.heartofenglandbridge.co.uk
heartofenglandbridge@gmail.com



THE
RUGBY FLOOR COMPANY

DUNCHURCH SHOWROOM

open by appointment

01788 815700

PARQUET | WOOD | KARNDEN | LAMINATE | RENOVATION



Beautiful floors for beautiful homes

3C SOUTHAM RD | DUNCHURCH | CV22 6NL

Dunchurch Social Club

It is always sad to see one of our village businesses close and never more so than the Social Club which, according to their Facebook page, permanently closed its doors on 10th January 2024. (Readers should be aware that the Cinnamon Lounge restaurant above it is still open.)

Originally registered as a club with the Financial Conduct Authority on the 5th February 1934, it has been an integral part of village life and in the past, rose again from a particularly dreadful situation.

Taking a direct hit from a bomb on the 19th November 1940, it was demolished and sadly, two men, Victor Edward Eley



Devastation caused by a stray bomb in November 1940

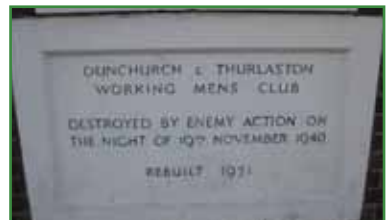


The Social Club as it appears today

and Arthur Mason who were playing billiards at the time, lost their lives. The stewardess of the club, Kathleen Wilson, who was serving in the bar was buried under the rubble and rescued hours later, requiring plaster from knee to hip. Her husband, also the club steward, had seen the

bomb falling and warned his daughters and an evacuee to dive under a table. Fortunately, they all survived.

The club was rebuilt in 1951 and many of us will have happy memories of time spent there. Surely, we can all agree, it would be wonderful if it could once again rise like a 'Phoenix from the ashes' and continue to be a social meeting place for our village. Let's hope so.



A proud moment for the village as the newly built club reopened and a commemorative stone was unveiled



LITTLE GRANGE

NURSERY

Quality care and education on our idyllic 90-acre site

Register for our
Open Day on
27th April



Pathway to Bilton Grange
or to local primary school

Outstanding provision for
ages six months to five years



Part of the
**RUGBY
SCHOOL
GROUP**

www.littlegrangenursery.co.uk

The Dunchurch Oak Line Book

Situated on The Heath, this wonderful addition to our village will shortly have a book produced and printed to tell its story and that of other notable trees in the village. Below is an update on its progress by Mike who, from start to fruition, has been the driving force behind this project. Thank you Mike.

By Mike Judge, MBE

Helpful friends, (especially the Ewingtons) have been reviewing the book and commenting on errors or omissions as requested. There are just a couple of editors left to submit their observations before volunteer Jane Ewington works with me to reorder the text if required. I will then liaise with the library about a lengthy loan of the book so villagers may visit and look at it.

More significant in a way is the creation of an electronic version (e-book) by Eric Ewington, enabling you to download it and read at your leisure. We hope this too will be available in a few weeks.

As regards the new trees themselves, they are in good shape, most having shed their 2023 leaves and it is heartening to see the odd person checking the oaks out for signs of buds and potential growth. We are confident that our oaks are firmly enough established to withstand whatever the wintery weather may have thrown at them and reward us with fresh leaves, acorns, oak apples and new growth in the months to come!

The Return of the Missing Scots Pines!

In the Dunchurch Oak Line book, you will be able to see a number of references to the historic

Scots Pines which originally ran from close proximity to the Bilton Grange entrance and sporadically towards the M45 junction. Time and possibly some neglect have taken their toll and the appropriate authorities are being encouraged to restore and replace these splendid trees thereby enhancing the approach and exit from the village. Fortunately, the work has already commenced with the planting of two saplings on the green central reservation between Bilton Grange and the sportsfield. I am writing to WCC and thanking them for starting the project. Any offer of checking the trees and helping to water in hot weather or periods of drought would really support our appeal! Thank you.



A very healthy looking Scots Pine recently planted on the Rugby Road verge

Thurlaston Meadows Care Home

We provide first class residential care for elderly residents within a homely and relaxed atmosphere.



CENTRAL ENGLAND
PRESTIGE AWARDS
2023/24 WINNER



CENTRAL ENGLAND
PRESTIGE AWARDS
2022/23 WINNER



CENTRAL ENGLAND
PRESTIGE AWARDS
2022/23 WINNER

You too can be part of "The Meadows Family"

Thurlaston Meadows Care Home is an award winning family run Care Home set in 7.5 acres of beautiful grounds in the peaceful & tranquil village of Thurlaston Nr Dunchurch, Rugby.

We provide care for the elderly in a Home from Home environment where every room is unique and individual.

While our surroundings are peaceful and relaxing the home is full of life and everyone is part of "The Meadows Family"



Call our Home Manager to arrange your visit
Tel: **01788 522405**
www.thurlastonmeadows.com



Thurlaston Meadows Care Home

We provide first class residential care for elderly residents within a homely and relaxed atmosphere.



CENTRAL ENGLAND
PRESTIGE AWARDS
2022/23 WINNER



CENTRAL ENGLAND
PRESTIGE AWARDS
2023/24 WINNER



CENTRAL ENGLAND
PRESTIGE AWARDS
2021/22 WINNER

WE
NOW PROVIDE A
DAY CARE CLUB
IN OUR COSY LOUNGES

Lonely? Need someone to talk to? Does your regular Carer need a break?

We provide Elderly Day Care 7 days a week including

- Home cooked hot meal
- Snacks & refreshments
- Activities & entertainment
- Also transport can be provided, see below -

Arrive in style
in our electric Taxi



Wheelchair
Accessible



Tel: 01788 522405
www.thurlastonmeadows.com

Give the gift of flowers...

Mother's Day



Anne-Maries Florist

Mothering Sunday 10th March

Open 11am - 1pm

Delivery available all day Friday 8th & Saturday 9th

(shop open from 8.30am - 4.30pm)

Sunday 10th morning - Limited availability

*Established for 37 years and situated
in the heart of Dunchurch village*

Email: amflorist1@outlook.com

 www.facebook.com/AnneMarieFlorist

 [am_florist_dunchurch](https://www.instagram.com/am_florist_dunchurch)

01788 521 881

www.amflorist1.wixsite.com/website



CUPPA

COFFEE LOUNGE

Open 8.00 am – 4.30 pm



[cuppadunchurch](https://www.facebook.com/cuppadunchurch)

4 Daventry Road, Dunchurch

email: cuppadunchurch@gmail.com



Art in Dunchurch

Art in Dunchurch will be back again in June this year. If you've not been before you've missed a treat, so make sure you come along this year!

Now an established part of the Dunchurch summer calendar, we will be showing the work of 18 talented artists at Inglenook (next to Fosse House Gallery), right in the centre of Dunchurch village. With the beautiful gardens and lovely courtyard café offering refreshments throughout the day there's a lot to look forward to.

Please take note – our opening times this year will

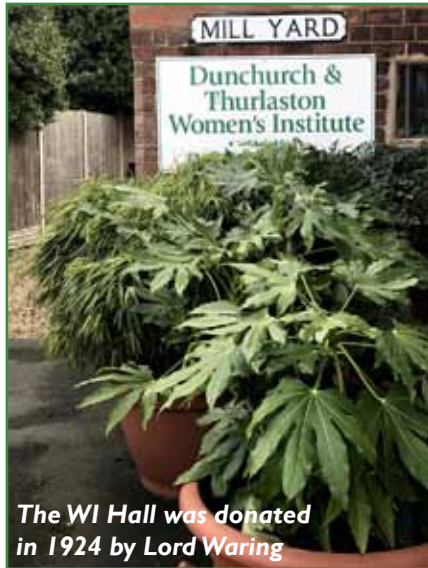
be six days from Saturday 22nd June to Sunday 30th June 10.30am – 4.30pm (weekends, Wednesday and Friday) with our popular music and drinks night featuring 'After Dark Jazz' on Wednesday 26th June until 8pm.

We look forward to welcoming you this year.



Dunchurch and Thurlaston WI

By Anne Gilbert



The WI Hall was donated in 1924 by Lord Waring

The WI is again holding one of its successful book and jigsaw sales on Saturday, 16th March from 9.30am–12.30pm. Coffee, tea, soft drinks and home-made cakes will be available at the WI Hall, Southam Road, Dunchurch. Entry is free.

Remember, the WI Hall can be booked for parties (children and adults), meetings, workshops etc at reasonable rates. Our kitchen has just been updated with an island unit courtesy of a grant from the Dunchurch Festival Committee.

Contact Anne Gilbert on 01788 811837 or email annegilbert1@hotmail.com



Revel Funeral Care

"One family caring for another"

Independent Family Funeral Directors Serving the Community of Rugby & Surrounding Areas

- Professional and caring team under the supervision of Jaime Hailstone.
- Available 24 hours a day.
- Home visits by appointment.
- Private arranging suite & Chapel of Rest.



Revel Funeral Care

63 Overslade Lane, Rugby, CV22 6ED.

01788 519577

info@revelfuneralcare.co.uk

www.revelfuneralcare.co.uk

Dunchurch Sportsfield & Village Hall

For Hire

Dunchurch Village Hall and its facilities can be hired for a variety of events - from Community Groups, Fundraising Events & Public Meetings to Weddings, Parties and Family Functions

The facilities briefly comprise:

- Capacity in Main Hall - 160 Theatre Style or 130 seated at tables
- Main Hall has permanent stage, adjustable lighting, fully equipped sound system with hearing loop
- Separate meeting room and a lounge, club annexe & sportsfield including changing rooms
- Modern kitchen/bar - licence available
- Main Hall air-conditioned. Other rooms centrally heated
- Disabled facilities & double door access for loading
- Set in landscaped grounds with 70 car parking spaces, including disabled



For further details please contact us or visit the website:

Tel: 01788 522444

Email: bookings@dunchurchsportsandvhall.co.uk

Web: www.dunchurchsportsandvhall.co.uk

Rugby Road, Dunchurch CV22 6PN

Rheams (Plumbing and Heating) Limited

Tel. 01926 428752

FAMILY RUN BUSINESS ESTABLISHED IN 1967

- GAS SAFE REGISTERED ENGINEERS
- 24 HOUR CALL OUT SERVICE, 7 DAYS A WEEK
- RUGBY BASED ENGINEERS
- FREE INFORMATIVE CONSULTATIONS
- LARGE/SMALL SCALE RENOVATION
- NEW BUILDS
- BOILER REPLACEMENTS/REPAIRS (natural gas, LPG and commercial)
- LANDLORDS' CHECKS
- POWERFLUSH SERVICE
- BATHROOM INSTALLATIONS
- ALL GENERAL PLUMBING

email: info@rheams.co.uk

Lamppost Hanging Baskets

Would you, your family, your business, your community group or perhaps even your street like to sponsor one of the 32 lamppost hanging baskets that have been such a game changer to the floral displays in the centre of our village? These will again be planted and cared for by Smith's Nurseries of Baginton until such time as they are ready for FODS to take ownership and hang them in position. The cost of each is £45.

If you would like to help, please email friendsofdunchurch@gmail.com or make a bank transfer to Lloyds Bank, Account no 38166768, sort code 30-91-91 stating your name and use the word basket as a reference. Unless made anonymously, sponsors will be mentioned in the next magazine. Thank you. Your help would be much appreciated.



The lamppost hanging baskets have been a real eye catcher for those visiting and passing through our village

Rebranded Village Pharmacy

By Saghir Ahmed

Big changes are on the horizon as Imaan Healthcare assumes operations at Rowlands Pharmacy in Dunchurch from 1st March.

All existing staff members will be retained, ensuring

a seamless transition for customers. We will be providing an array of essential services, from Pharmacy First consultations to vaccinations, travel health consultations, immunisations, and blood pressure monitoring, to meet

the community's diverse healthcare needs.

We look forward to welcoming you to our newly rebranded pharmacy. Stay tuned for more updates as we embark on this exciting journey together.

Wanda Fashions



Wanda Fashions@TheGreenDunchurch

The Old Bank House, The Green, Dunchurch CV22 6NX

T: 01788 522021

E: paula@wandafashions.com

www.wandafashions.com

EXCLUSIVE PRIVATE HIRE

Providing a service for Dunchurch

WOMBLES WHEELS

*wishes to thank it's
customers from Dunchurch & the
surrounding area for their continued
support of local business.*

**Available to take you on
your holidays in England**

R. Woerner Trading as Wombles
Wheels, specialises in long distance
work but short trips can be
accommodated.

**07979 032 068 or
01788 811 723 (9am - 5pm)**

10 YEARS EXPERIENCE • CRB CHECKED

Email: robin.woerner@hotmail.co.uk

Dunchurch Achievements Remembered

It was back in the summer of 2019 that Dunchurch swept the board in the Heart of England Britain in Bloom awards. We were voted the best large village in the seven counties of Staffordshire, Shropshire, West Midlands, Warwickshire, Worcestershire, Herefordshire and Gloucestershire, as well as best in category, receiving gold awards for both. This was unprecedented for a first-time entrant. How wonderful then that neither the Royal Horticultural Society or Heart of England have forgotten our achievements. Under the heading of 'Celebrating 60 years of Bloom', this Dunchurch photo is being used to accompany the following text to publicise the event:

'In 2024, we'll be celebrating the 60th anniversary of Britain in Bloom. Over the years, Bloom has continued to bring people together, forged life-long relationships and enriched lives. The theme for this milestone year is 'friendship,' and we're inviting you to share your stories of friendships that have blossomed because of Britain in Bloom, It's Your Neighbourhood or other community gardening projects.'



Daisy and her nan making sure that the blooms were in tip top condition for judging

FODS can certainly concur that the Dunchurch entry forged new friendships, galvanising as it did so many other groups and individuals from the village who joined to help bring this award home for our village. Each year since then, the legacy has been seen with the continued planting of beautiful wheelbarrows and troughs that volunteers produce. As they say, 'there is no I in team!' We thank you all for your continued support.

Photo on the Amberol website showing fabulous Dunchurch blooms





EVOLUTION-PHYSIO

~ Rehab ~Injury Prevention

~Improved Mobility ~Pain Relief



What we offer:

- Specialist Physiotherapist
- Soft tissue therapy
- Acupuncture
- Joint mobilisation
- Biomechanics Assessment
- Phits Orthotics
- VALD Performance Technology



**Find out how we
can help you ...**



www.evolution-physio.co.uk

info@evolution-physio.co.uk

07778 022 033

Based in Hillmorton, Rugby



Dunchurch Village Hall and Sportsfield

By Keith Protheroe, Trustee

In December 2023, the village hall celebrated its 20th anniversary, and with the passing years came the need for some updating and remedial works.

Regulars may have noticed the addition of a height barrier restricting access to the sportsfield. This has been added at a cost of £7,000 and will hopefully prevent further damage and financial loss caused by traveller encroachment. Our thanks to Dunchurch Parish Council for their contribution of £5,000 towards this.

The roof has been de-mossed and the gutters cleaned, the air conditioning repaired and new and improved toilet facilities added to the annex, plus the annual repaint of the interior of the building has now been completed – all at a further cost of £29,900.

As Trustees, we continue to care for the building and the sportsfield, protecting its future for years to come. New Trustees are always welcome and if anyone from the village would like to help, please do get in touch kprotheroe.dsvh@outlook.com.

Thankfully, the village hall



The sports lounge transformed into a café for a fundraising event



and sportsfield continues to be a popular venue for a variety of uses and full details of charges can be found on our Dunchurch Sportsfield and Village Hall website. Residents of Dunchurch Parish continue to receive a discounted hire rate.

New height barrier to restrict access to sportsfield

Make A Difference!

By Sue Turner, FODS Trustee

We always need more volunteers to help keep the centre of Dunchurch looking its best. This is the area most seen by visitors and one we can all enjoy. We sweep, we clean, we weed, we edge, we tidy, we litter pick, we plant and after all that, we chat and have a well-deserved cuppa! Would you like to be part of the group that makes it happen?

Come and join us most Sunday mornings for an hour or so. You will be very welcome and if we have more volunteers we can move to other parts of the village as well. It's always satisfying when a person remarks



Keeping the memorial area tidy is a priority



Always time for a cuppa and convivial conversation

on how nice the village looks knowing you have helped to make it look its best!

Please call 07983 345381 or email pastures68@gmail.com and I can give you further details of meetings and activities. Thank you.



Making new friends through light gardening

Friends of Dunchurch Society CIO

Spring Fair

at Dunchurch Village Hall

Entry Fee
50p

**CHILDREN
FREE**



on Saturday 27th April 2024
10.30am till 1pm

The bacon butties are back!
Join us for refreshments in the Tip Top Tea Room!

Woodcraft by Phill Freeman

Bespoke Gifts

Beauty Products

Pre-loved Clothing
& Accessories

Books

Wanda Fashions

Home Decor

Family Games Area
And much more!

ALL PROCEEDS GO TO
DUNCHURCH IN BLOOM VILLAGE PROJECTS

Free parking available

Formed by likeminded residents who love Dunchurch and its heritage and wish to protect and enhance its environment in order to make the village a better place to live in, work in and visit.



FRIENDS OF
DUNCHURCH
SOCIETY CIO (FODS)



Village Green House, The Green, Dunchurch, CV22 6NX Telephone: 07837 182114 Email: friendsofdunchurch@gmail.com

CIO Charity Registration no.1203193



Dunchurch Boughton C of E Infant Academy and Nursery

By Suzanne Marson, Headteacher

It is hard to believe that we are almost halfway through the school year! The past term and a half has seen lots of opportunities provided for the children such as visits to the theatre and a museum, listening to an author read their story, children carrying out fieldwork to find out about the local area and visits to the church. As always, there continues to be a buzz of enthusiasm around school, with happy children who are engaged in their learning. As we hopefully begin to see the start of warmer weather, there will be opportunities for each year group to experience school trips, providing memorable moments and opportunities to further develop the children's learning in a real-life context.

We have a fabulous PTA in school who are continuously working hard to provide opportunities for the children through activities such as a sponsored welly walk, a Christmas party and Easter events. Hot chocolate and ice lolly Fridays are also firm favourites! This academic year, they have started to hold termly preloved uniform sales, providing opportunities for parents to purchase items at a lower cost. So far this year, the PTA have donated money towards refreshed reading areas in the

reception classrooms, the purchasing of a selection of books and they will shortly be purchasing a number of iPads for the children to use in lessons. We are very grateful to the PTA for everything that they do and to the parents who support the events.

We would like to thank the Dunchurch Festival Group for generously donating £500 towards the development of the Early Years classrooms in school. The money has been used to purchase some additional small-world items, allowing the children to develop their imagination when role-playing different scenarios. We would also like to thank the Rugby Round Table for donating money to allow us to purchase books for the children in school. We are very grateful for all the support that we receive from local organisations and the community.



Badminton at Dunchurch Village Hall

Monday, 7.30pm – 9.00pm

We are looking for 'able players' (not new to the game) who would like to join a friendly, mixed ability group. Why not come along and try it out without obligation?

Who knows, you might enjoy it! For more details, contact Pat, judge.patricia@googlemail.com



Duke of Edinburgh Award

The Pantomaniacs and FODS have had the pleasure of hosting 15-year-old Matilda who is working towards her silver Duke of Edinburgh award. Below, Matilda explains how the D of E scheme has helped her.

'The volunteering section of D of E is all about making a difference to other peoples' lives by using your experience and skills to make an impact on your community. It helps you to become a part of the community, giving you an opportunity to learn more about others. Volunteering provides you with better life skills, a sense of self-accomplishment and helps others in the local area. My silver volunteering journey has started with making new friends whilst helping to serve local people supper during the panto while they enjoyed the entertainment and atmosphere of the evening. I had some really fun evenings helping with FODS and I look forward to my next challenges including, crocheting poppies for the 80th anniversary of the D-day landings and helping FODS keep the village clean and tidy.'



This photo was taken in the Cotswolds for my girls' bronze qualifying award. We had to walk for two days and camp for one night and luckily the sun shone! On the practice walk it poured with rain!





School Holiday

Swimming Lessons **NOW** Available

@ Bilton Grange School,
Rugby Road, Dunchurch CV22 6QU

JKM
Swim School



3 Years to Pre-competition standard



Teachers with considerable experience



3-day crash courses available



Private lessons on a 1:1 or 2:1 basis



National Teaching Plan stages 1:10

Easter and
May half
term lessons
available

Book NOW to avoid disappointment

For more information
please contact Debbie



07824 813156

e: jkmswim@yahoo.co.uk



Find us on Facebook:
JKM Swimschool

www.jkmswimschool.co.uk



Heart of
England
Bridge
Friendly Bridge

NEW MORNING
GENTLE
DUPLICATE



Dunchurch
Sports Field and
Village Hall

Tuesday Morning
10.00-12.00

Book on web site:
www.heartofenglandbridge.co.uk
or a message

£4.50

NT

Nicky Bainbridge
07710 467 023
www.heartofenglandbridge.co.uk
heartofenglandbridge@gmail.com



Are hosting an

**AFTERNOON OF FREE
BOWLING & FUN!**

SUNDAY 26TH MAY
1PM - 5PM

ANY AGE, ANY ABILITY WELCOME!
On the bowls green and in Leamington Hastings Parish Hall
For more information please call
01788 336913

**BOWLS
SUPPLIED**

St Peter's Church

By Rev Pat Townshend

We are still in the season of Lent, a period of 40 days from Ash Wednesday to Palm Sunday when Christians reflect on where they stand with God and with one another. It is a time when we ask ourselves: am I a better person than I was last Lent? Am I really what I ought to be? Am I living a life I approve? Do I carry the peace of Christ into my daily life? And then we reflect on how we can be better, how we can carry Christ's light into the world more effectively. And this all leads up to Easter, to that great celebration of light in the darkness. Through Christ's triumph over death, we are assured that he is with us in the worst situations as well as when things go well. We are assured of his leading us and of his grace to be better people. We are assured that he has triumphed over evil and that, whatever happens, he is there to support and strengthen us.



*St Peter's Churchyard looking towards Onley.
Photograph by Andrew Rix*

As ever, St Peter's is always open from 10:00 to 4:00 to give people a space to come and reflect and to find the calm and strength God offers each one of us in our daily walk. Our churchyard is always open for people needing a peaceful time in nature but, it must be added, we are in desperate need of gardeners who will help to keep it neat and tidy. Churchyard gardening takes place once a fortnight, February to November and everyone enjoys company and a doughnut. If you are interested in helping please contact Chris Sarson at candjsarson@btinternet.com.

Easter Services in Dunchurch

24 March	Palm Sunday	10:30am	Holy Communion and procession of palms	St Peter's
28 March	Maundy Thursday	7:30pm	Holy Communion	Baptist Church
29 March	Good Friday	9:45am	Procession of witness	From the Heath opposite the Methodist Church
		10:00am	Raising of the Cross	Dunchurch War Memorial
		2:00pm	Last Hour at the Cross	St Peter's
17 April	Easter Sunday	9:00	Holy Communion	St Edmund's
		10:30	Holy Communion	St Peter's

Dunchurch Baptist Church

By Reverend Alistair Jones

There is a change at the Baptist Church. My name is Alistair Jones and I have been called to be their new Minister. I will be moving into the village at the end of February from the village of Broughton, which is just outside Kettering. I am married to Gillian, and we have two sons and a daughter. Along the way we have acquired a son in law and a daughter in law and now have five grandchildren with a sixth on the way.

I grew up in Tunbridge Wells and worked for many years in the family business as a fishmonger. Church has always been part of my life, as I was brought up in a Christian home. Although Church was something that we did every week, I did not ask Jesus into my life until the age of 15. It was while we were on holiday, staying in a caravan on the farm where my older brother worked. It was after the evening service, as we sat around the table in the caravan that Jesus spoke to me and called me to follow Him. That night I asked Jesus into my life.

Since then, the Holy Spirit has led me through many changes at a slow and steady pace. This included selling the family business and going to work for AXA in their distribution centre. It also meant moving home and moving

to a Baptist Church. God called me into Ministry in 2007 and I finished college in 2011. Gillian and I spent the next eight years up on Teesside where we made many good friends.

In all the changes, God has been faithful to us, helping us in the difficult times as well as in the good. We look forward to all that God has in store for us in our time at Dunchurch and look forward to meeting you and being part of village life.

Come and join us at 10:30am on Sunday mornings, or at one of our midweek activities. All of the details are on the website, dunchurchbaptist.org.uk.

Every Blessing

Ali



Cake and craft every first Friday of the month from 10am to noon. Just one of our community activities to which you are most welcome

Dunchurch Festival Group

Do you have a talent?

Can you play an instrument?

Can you swallow fire?

Do you have circus skills?

The DFG is looking at promoting local people with skills and talent.

If this is you, please contact Guy Watt (Chairman), at gwattdfg@gmail.com



Advertising rates

Professionally delivered to homes and businesses in Dunchurch Village including Toft, Lime Tree Village, Dunchurch Hall and Lime Tree Avenue. Also now delivering to Onley Park. Over 1500 copies distributed each quarter, with an estimated readership of 3000.

Digital advertising included free of charge: advertisers can have, if required, a post on FODS Facebook Group page once a week on 'Thankful Thursday' – a useful update message for you and an effective opportunity to advertise for staff vacancies etc locally at no cost.

Size	Dimensions	Price
Full page	137mm x 197mm	£100
Half page landscape	137mm x 97mm	£50
Half page portrait	66mm x 197mm	£50
Quarter page	66mm x 97mm	£25

To place an order email

friendsofdunchurch@gmail.com

Deadline for June 2024 issue: 28 April 2024

Index of advertisers

Anew	9
Anne-Marie Florist	22
Anya Court	10
Contented Soles	40
Courtyard Dental	16
Cuppa	22
Dunchurch Sportsfield and Village Hall	24
Evolution Physio	28
Heart of England Bridge	16 and 34
Jane Archer – Artist	15
JKM Swim School	34
Leamington Hastings Bowls	34
Lovetoloveyouyoga	33
Revel Funeral Care	24
Rheams Plumbing	24
Rhythm Time	6
Rugby Floor Company	16
Rugby School Group	18
The Green Man	6
The Kitchens Inc	5
Thurlaston Meadows	20
Union Canal Carriers	11
Wanda Fashions	26
Wombles Wheels	26

Dunchurch Community Directory

Badminton Group	Dunchurch Village Hall, Monday 7.30pm	judge.patricia@googlemail.com Pat Judge 01788 810253
Beavers	Boys and girls aged 5¾ – 8 Mondays & Tuesdays, Scout hut, Done Cerce Close	www.dunscout.org.uk join@dunscout.org.uk
Cubs	Boys and girls aged 8 – 10½ Wednesdays at the Scout hut, Done Cerce Close.	www.dunscout.org.uk join@dunscout.org.uk
District of Dunchurch Brass	Wednesdays 7.45–10pm, Band Room, 15 Rugby Road, CV22 6GP	Lorraine Goodacre 07963 144704 Gary Smallwood 07876 688210 www.districtofdunchurchbrass2006-web.info
Dunchurch Allotment Association	Situated on Coventry Rd	www.dunchurchallotments.org.uk admin@dunchurchallotments.org.uk Secretary Paul Sanders 01788 811744
Dunchurch Bellringers	St. Peter's Church. Sunday Service ringing 9.50-10.30am, Practice, Wed 7.45-9pm	Tower Captain Simon Benton, 07890 325434 simon.j.benton@gmail.com
Dunchurch and Bilton Cricket Club	Based as Dunchurch Village Hall Rugby Rd.	https://dunchurchbilton.play-cricket.com
Dunchurch and Thurlaston WI	Meetings 2nd Thursday of each month, 2pm, WI Hall, Southam Rd.	Anne Gilbert 01788 811837 annegilbert1@hotmail.com
Dunchurch Band	Senior and training band	www.dunchurchband.co.uk dunchurch.band100@yahoo.com
Dunchurch Baptist Church	Baptist Church, Coventry Road.	www.dunchurchbaptistchurch.org.uk Elders, Chris Tabor 07899 841279, Katie Wederell 01788 842736, 07515 472578, Katie.w@dunchurchbaptistchurch.org.uk church secretary Sarah Coulon Sarah.c@ dunchurchbaptistchurch.org.uk
Dunchurch Boughton C of E (VA) Junior School	Primary education situated in Dew Close	www.dunchurchjuniorschool.org.uk admin3391@welearn365.com 01788 811028
Dunchurch Community Library	School Street Open Tues, Thur, Fri 10am - 5pm and Sat 10am to noon	www.warwickshire.gov.uk/dunchurchlibrary dunchurchcommunitylibrary@btconnect.com 01788 811355
Dunchurch Festival Group	Organise fete and other events. Meetings third Monday of each month 7.30pm at the village hall	www.dunchurchevents.org Chair Guy Watt gwattdfg@gmail.com Secretary Julie Peters juliepeters91@ hotmail.co.uk
Dunchurch Girlguiding including: 1st Rainbows 3rd Brownies 1st Guides	GirlGuiding girls have fun, adventure and space to discover their potential Age 5 – 7 yrs. Wed 3.45 – 4.45 pm Age 7 – 10 yrs. Wed 5.00 – 6.30pm Age 10 - 14 yrs. Wed 6.45 – 8.15pm	www.girlguiding.org.uk is where parents/ carers may express their daughters' interest in joining. Adult volunteers welcomed.

Dunchurch Health Walks	Tuesday 2pm, Friday 10.30am Meet at war memorial	
Dunchurch Infant School and Nursery	Nursery children are taken from aged 2yrs 9months. Other year groups, Reception, year 1 and 2	www.dunchurchinfantschoolandnursery.co.uk , office@dunchurchinfants.co.uk 01788 810292
Dunchurch Pantomaniacs	Organise and perform village panto in January. Rehearsals begin October.	paul.lepoidevin@btinternet.com sueprotheroe@ymail.com
Dunchurch Parish Council	PC office based in the Library. Open Tuesday and Thursdays 10am – 1.00pm	clerk@dunchurchpc.org 01788 817550 or 07474 705061
Dunchurch Photographic Society	Meetings held at WI Hall, Southam Road	www.dunchurchps.com secretary@dunchurchps.com
Dunchurch Surgery	Dunsmore Heath (off Rugby Rd)	www.dunchurchsurgery.warwickshire.nhs.uk 01788 522448
Dunchurch Village Hall	Rugby Road	bookings@dunchurchsportsandvhall.co.uk 01788 522444
Dunchurch Voices	Ladies choir meets Wednesdays, 7.30pm at the Baptist Church, Coventry Road	Barbara Davies 07890 659857
First Dunchurch Scout Group	Fun, challenge and adventure for boys and girls aged 10½–14. Done Cerce Close on Thursdays	www.dunscout.org.uk join@dunscout.org.uk
Friends of Dunchurch Society	Organises Britain in Bloom and Winter Wonderland Produces the village magazine	info@vghrugby.co.uk 07837 182114 fodnews1@gmail.com
Heart of England Bridge Club	EBU Affiliated. Three pairs sessions and one practice session weekly. Lessons and courses also offered. Held in club room, Dunchurch Village Hall.	www.heartofenglandbridge.co.uk heartofenglandbridge@gmail.co.uk 07710 467023
Knowing Stillness Meditation	Dunchurch Library 10am Wednesday	Jim Hesketh 01788 891066
Rugby About Turn	Newsletters on local development	richardallanach@aol.com
St Peter's Church	Vicar: Reverend Patricia Townshend revptownshend@gmail.com , 01788 461987 Churchwardens: Celia Jones 01788 314564 / 07712 936355 Kathryn Fowler: 07780 116024 / 01788 311118 Thurlaston Deputy Churchwarden: Brian Bowsher: 01788 812094 churchwarden@stpeters-dunchurch.org	

To make any amendments or to add your Dunchurch-based, non-commercial club or organisation, please email
friendsofdunchurch@gmail.com

Podiatry clinic & Shoe Fitters for all foot types

Degree Qualified HCPC Registered Podiatrist/Chiropodist

We are Rugby and Bilton's premiere podiatry/chiropody clinic and footwear specialists. We pride ourselves in being friendly and approachable and will only offer advice and treatment that is in your best interests to help you.



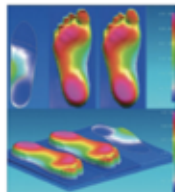
EAR WAX REMOVAL!!!

We are pleased to offer ear cleaning options with our brand new state of the art equipment

- Ear Microsuction
- Ear Syringing/ Irrigation
- Home visits available

General Podiatry and Chiropody services including:

- Nail cutting
- Corns & Calluses
- Diabetic foot care
- Verrucae
- Ingrown toenails
- Fungal infections
- Home visits
- Heel pain/ Plantar Fasciitis
- Sporting/ occupational injuries



Richard has carried out extensive training and specialises in the following:

- Nail surgery for ingrown nails
- Steroid/ hyaluronic acid injections
- Gait analysis/ biomechanical assessment
- Bespoke insoles created using the latest 3d laser scanning technology
- Minor skin surgeries and biopsies
- Permanent/ semi permanent corn removals



**WE ARE
EXPANDING!!!
BRAND NEW SITE IN
DAVENTRY!!!**



**1 Prince William Walk, Daventry
NN11 4AB
01327 878181**

**30a The Green, Bilton, CV22 7LY
01788 877575
www.contentedsoles-bilton.co.uk**